

FRUIT TREES IN CONTAINERS

Our fruit trees are grown in containers in bush form, with a 45cm clear stem, central leader and well-developed side branches. Heights indicated are approximate and should be used as a guide only.

Rootstocks

Fruit trees are grown on a range of rootstocks, both to control their rate of growth and the height of the tree at maturity. The table shows approximate size of mature trees on varying rootstocks.

Our apples are grown on MM106 rootstocks.

Fruit	Rootstock	Approximate Mature Height
Apple	MM106	4.0–5.0m (14-18ft)
Pear	QUINCE C	2.4–3.0m (8-10ft)
	QUINCE A	4.0–5.0m (14-18ft)
Plums	Pixy	3.0–4.5m (10-15ft)
	St Julian A	4.0–5.0m (14-18ft)
Cherries	Colt	3.0–3.6m (10-12ft)



Apple Braeburn



Apple Scrumptious



Pear Doyenne du Comice



Pear Conference

Pollination

Apples and pears may require pollinators. All varieties that require a pollinator(s) in the list below will cross-pollinate with each other, with the exception of Bramley.

All varieties of plums and cherries that we offer are self-fertile and do not need pollination partners.

For guidance on planting, staking, protection and maintenance please refer to the information section. Fruit trees being less than 6ft tall will only require staking on exposed sites.

SOME FRUIT TREES TRAINED AS FANS AND STEPOVERS ARE AVAILABLE IN LIMITED QUANTITIES. PLEASE ASK FOR DETAILS.

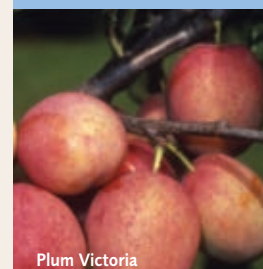
		Pollinators	Eating or Cooking	Rootstock	Approx size (cm)	£ each
Apples						
Blenheim Orange	An old favourite - cooks, eats and keeps well.	2	E	MM106	150-175	30.00
Braeburn	Excellent all rounder with crisp, firm aromatic fruit.	1	E	MM26	150-175	30.00
Bramley Seedling	The most popular cooking apple. Not suitable as a pollinator.	2	C	MM106	150-175	30.00
Cox – Self Fertile	The improved 'Cox'. Very self fertile so no pollinators are required.	s/f	E	MM106	150-175	30.00
Golden Delicious	Well known eater with very good flavour when grown in the UK.	1	E	MM106	150-175	30.00
James Grieve	Deservedly popular – excellent flavour and reliable cropper.	1	E/C	MM106	150-175	30.00
Katy	Bright red fruits, refreshingly juicy. Good pollinator, flowers mid-season.	1	E	MM106	150-175	30.00
Scrumptious	A very special apple suitable for planting in all areas of UK. Good cropper with excellent fruit for eating.	s/f	E	MM106	150-175	30.00
Worcester Pearmain	Well-known eater. Reliable crop of delicious orange-red fruit.	1	E	MM106	150-175	30.00
Pears						
Comice	The Queen of Pears if you are looking for taste, texture and flavour.	1	E	Quince A	150-175	32.00
Concorde	Heavy cropper and compact grower. Medium-sized fruit.	s/f	E	Quince A	150-175	32.00
Conference	A reliable cropper in less than perfect conditions. It is self-fertile but a nearby pollination partner will ensure a better crop.	s/f	E	Quince A	150-175	32.00
Williams	Old English variety and a regular cropper. Quality of fresh fruit is very good but storage qualities are poor.	1	E	Quince A	150-175	32.00

FRUIT TREES IN CONTAINERS

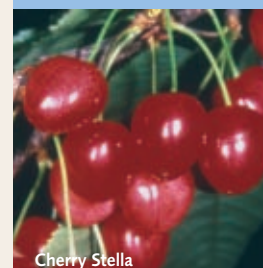
		Pollinators	Eating or Cooking	Rootstock	Approx size (cm)	£ each
Plums						
Cambridge Gage	Similar to the old Greengage but a more reliable and heavier cropper. Delicious yellowish-green flesh.	1	E/C	St Julian A	150-175	32.00
Czar	Reliable cropper with medium size fruit. Dark-purple with yellow flesh.	s/f	E/C	St Julian A	150-175	32.00
Damson Merryweather	Blue-black skin, yellow flesh, which is juicy and acidic. Self-fertile and an excellent all-round performer.	s/f	C	St Julian A	150-175	32.00
Jubilee	An excellent plum similar in appearance and flavour to Victoria but with much larger fruit.	s/f	E	St Julian A	150-175	32.00
Oullins Golden Gage	Large golden yellow fruit of delicious gage-like flavour. Excellent for freezing or bottling.	s/f	E/C	St Julian A	150-175	32.00
Victoria	The most popular plum. Reliable, heavy crops of large red fruits. Suitable for eating and culinary use.	s/f	E	St Julian A	150-175	32.00
Cherries						
Morello	The most popular dark red acid cherry usually used for cooking.	s/f	C	Colt	150-175	32.00
Stella	Self-fertile sweet cherry. The fruits are large red and juicy.	s/f	E	Colt	150-175	32.00
Sunburst	New from British Columbia. Black, sweet and self-fertile. A gorgeous flavour – try it and see!	s/f	E	Colt	150-175	32.00
Other Fruits						
Fig - Brown Turkey	Large brown pear-shaped fruit with sugary rich red flesh. Hardy.		E		125-150	32.00
Filbert Nut - Cosford	Slightly larger than the Cobnut with a long husk (full beard), considered to be of superior quality.	1	E		90-120	22.00
Kent Cobnut	Large nut, excellent flavour and compact habit.	1	E		90-120	22.00
Mulberry - King James	A small and long-lived tree. Leaves are almost heart-shaped. Fruits are deep red and very tasty. Best on well drained soil in a sunny position.	s/f	E/C		150-175	39.00
Nottingham Medlar	Large white flowers in late spring and early summer, are followed by large brown fruits. When picked these unusual fruit should be stored in sawdust until soft. This is known as bletting. Eat with wine and cheese to make palatable!!	s/f	C	Quince A	150-175	35.00
Quince Vranja	An attractive tree with a beautiful golden fruit. Self-fertile. Excellent fruit for culinary purposes especially jelly making.	s/f	C	Quince C	150-175	35.00
Walnut - Broadview	The best form for the UK. Fruits from an early age (year 3). A small compact tree.	s/f	E		125-150	35.00



Damson Merryweather



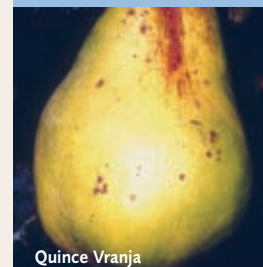
Plum Victoria



Cherry Stella



Mulberry King James



Quince Vranja

KEY TO SYMBOLS

★ good in any position	☀ prefers sunny site	☂ prefers shaded site	☂☄ prefers moist shaded site
☁ chalk tolerant	pH requires acid soil	💧 good on moist site	⦿ requires well drained site
🏠 requires sheltered site	🌊 good in coastal areas	⦿ good in exposed areas	⦿★ good in most soils